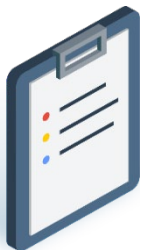


Equipment Overview

 6 MIN READ, 6 PAGES



Content Summary

- Equipment Overview:
 - Compact Lottery Terminal
 - Self-Serve Terminal (SST)
 - Ticket Checker
- Questions & Answers section

SEE NEXT PAGES FOR MORE INFO



Contact your Territory Manager or
Lottery Retail Support: **1-800-667-1649**



Lotto Transformation Equipment Overview

Compact Lottery Terminal



Features

- Training mode
- On-screen Jackpot display
- On-screen 19+ date identifier
- Real-time alert notifications
- More ticket replay options
- Shopping Cart Functionality
- Enhanced sales reporting
- Small footprint

Cleaning Tips

- Ensure terminal is in Lock mode or Logged off when cleaning
- To clean the **touchscreen and plastic surfaces of the terminal**, use a lightly damp microfiber cloth to avoid scratching the surface
- Do NOT use alcohol wipes



Contact your Territory Manager or
 Lottery Retail Support: **1-800-667-1649**



Lotto Transformation Equipment Overview

Self-Serve Terminal (SST)



Features	Cleaning Tips
<ul style="list-style-type: none"> • Dual high-definition screens • Accepts mixed payment methods: cash, credit or debit can be used in one transaction • A high-speed, thermal printer • Ergonomically designed with large screens that are accessible and easy to use for all players • UPS battery backup for uninterrupted power 	<ul style="list-style-type: none"> • Ensure terminal is in Lock mode or Logged off when cleaning • To clean the following surfaces, use a lightly damp microfiber cloth to avoid scratching surfaces: <ul style="list-style-type: none"> ▪ Screens ▪ Pin Pad ▪ Front Scanner ▪ Terminal Cabinet • Do NOT use alcohol wipes on screens



Contact your Territory Manager or Lottery Retail Support: **1-800-667-1649**



Lotto Transformation Equipment Overview

Ticket Checker



Features

- Larger screen makes it easy for players to read results

Cleaning Tips

- Ticket Checker may be powered off before cleaning.
- To clean the **touchscreen and plastic surfaces**, use a lightly damp microfiber cloth to avoid scratching the surface



Contact your Territory Manager or
 Lottery Retail Support: **1-800-667-1649**



Lotto Transformation Equipment Overview: Questions & Answers



What do I do if I don't have a microfibre cloth?

BCLC will be supplying every retailer with one microfiber cloth to use to maintain their equipment.

What cleaning products can I clean my equipment with?

- ✓ Use a microfiber cloth to avoid scratching touchscreen surfaces
- ✓ Use a small amount of water applied to the microfiber cloth when cleaning equipment – if needed.

- × Don't soak the microfiber cloth and then clean the equipment.
- × Don't use abrasive cleaners or cleaning materials such as a scouring pad as it could damage the equipment
- × Do not spray water directly onto the equipment.
- × Don't use cleaners such as: Windex, Zep, Mr. Clean and wipes, such as Lysol wipes.

What Lotto paper can I use in my Printer?

There are two different sizes of paper rolls:

- For the SST, larger paper rolls will be needed.
- For the Compact Lottery Terminal, smaller paper roll sizes will be needed.

Please use the Lotto Paper that is supplied to you by BCLC.

Who do I contact if my equipment isn't working?

Contact Lottery Retail Support: 1-800-667-1649.

How often should I clean my equipment?

Frequency of cleaning will be dependent on the environment and frequency of use. High touch components are recommended to be cleaned daily while less frequently components may be cleaned weekly or more frequently if needed.



Contact your Territory Manager or
Lottery Retail Support: **1-800-667-1649**



Lotto Transformation Equipment Overview: Questions & Answers



Why is cleaning the equipment important?

Regular cleaning of your equipment serves as preventative maintenance to keep your equipment functioning as intended with minimal down time due more serious maintenance issues.

Why can't I use alcohol wipes on my screen?

Alcohol wipes and other alcohol-based cleaners are not recommended by the equipment manufacturer for cleaning touch screens to preserve functionality.

Do I need to turn my equipment off to clean the terminal?

The Lottery Terminals do not need to be powered off to clean, simply lock the terminal screen or log-off before cleaning to prevent accidental key presses.

What lottery equipment is being replaced?

The Lottery Terminal, Self-Service Terminal (SST), and Ticket Checker will be replaced.

How will the new lottery equipment benefit retailers?

New lottery equipment features include Scratch & Win ticket Activation; Training Mode capabilities; On-screen 19+ date validator; Real-Time alert notifications; More Ticket replay options; Shopping Cart Functionality, Enhanced sales reporting and much more.

How will retailers be supported with training on the new equipment?

A comprehensive training program will be available starting Mid-January 2023. Retailers will have access to: Training Videos; Quick Reference Guides; In-person Interactive Training Exhibitions as well as Traditional Training Manuals & Job Aids all available 24/7 on the BCLC Retailer Hub.



Contact your Territory Manager or
Lottery Retail Support: **1-800-667-1649**

