

# Lotto 6/49 Game Enhancement

## September 12<sup>th</sup> – November 6<sup>th</sup>, 2022



**INSTRUCTIONS:** Please remove all existing POS elements (unless otherwise indicated on this plan-o-gram) and replace with the following items indicated below.

Please recycle all paper POS materials and dispose of Sidewalk Sign and Topper.

**New:**  
Poster A: 8.5" x 11"



**New:**  
Poster B: 8.5" x 11"



**New:**  
Hurricane Sign Coroplast

Please keep and use existing flip pad numbers on this new jackpot sign



**New:**  
Hurricane Sign Topper



Contact your Territory Manager or Lottery Hotline: **1-800-667-1649**



# Lotto 6/49 Game Enhancement

September 12<sup>th</sup> – November 6<sup>th</sup>, 2022



**INSTRUCTIONS:** Please remove all existing POS elements (unless otherwise indicated on this plan-o-gram) and replace with the following items indicated below

Please recycle all paper POS materials.

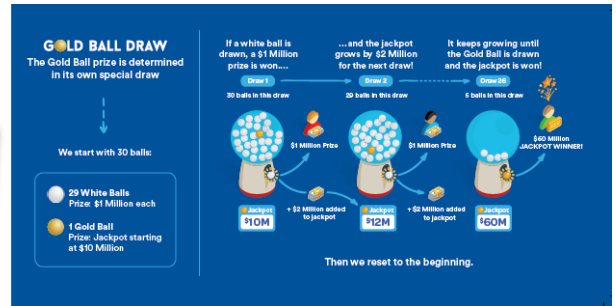
**New:**  
Poster: 17" x 22"



**New:**  
How to Play Info Sheet

Recommended placement: In convenient area for staff to refer to when conducting lottery transactions (not player facing)

Same \$3 ticket, now with two big jackpots!



**New:**  
Bubble Case Strip (RSG only)



**New:**  
Scratch & Win Display Case Strip

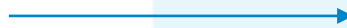


**New:**  
Jackpot Posters (RSG only)  
8.5" x 11", 17" x 22"



**New:**  
Selection Slips

Please replace existing selection slips with new selection slips



Contact your Territory Manager or Lottery Hotline: **1-800-667-1649**

