

Lotto 6/49 Game Enhancement

September 12th – November 6th, 2022



INSTRUCTIONS: Please remove all existing POS elements (unless otherwise indicated on this plan-o-gram) and replace with the following items indicated below

Please recycle all paper POS materials.

SST Topper

16.14" x 12.8"



Follow instructions below to insert SST Topper:

- Go behind the SST Topper and unclip the side panels
- Remove both the plexi-glass and backer by sliding both pieces up and out of position
- Remove the old poster and insert new poster in between the plexi glass and backer
- Place plexi glass, new poster and backer into position and slide down into position
- Re-clip plexi backer into place



SST Cling

3.5" x 7"

- Remove existing cling and replace with 6/49 cling.

Coaster

3.5" x 3.5"



Contact your Territory Manager or Lottery Hotline: **1-800-667-1649**



Lotto 6/49 Game Enhancement

September 12th – November 6th, 2022



INSTRUCTIONS: Please remove all existing POS elements (unless otherwise indicated on this plan-o-gram) and replace with the following items indicated below

Please recycle all paper POS materials and dispose of Sidewalk Sign and Topper.

Lightbox Posters
(select locations only)

11" x 17", 16.5" x 23.37"

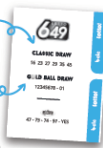
Recommended placement: Position posters in visible area near your customer



Same \$3 ticket, now with two big jackpots!

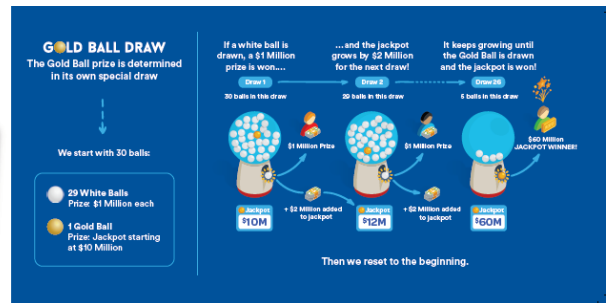
CLASSIC
\$5 Million Jackpot every draw.
The Lotto 6/49 we all know and love!

GOLD BALL **NEW**
Guaranteed \$1 Million or the Gold Ball Jackpot, which can grow to \$68 Million!
Match the unique 10-digit Gold Ball number on your ticket to win.



How to Play Info Sheet

Recommended placement: In convenient area for staff to refer to when conducting lottery transactions (not player facing)



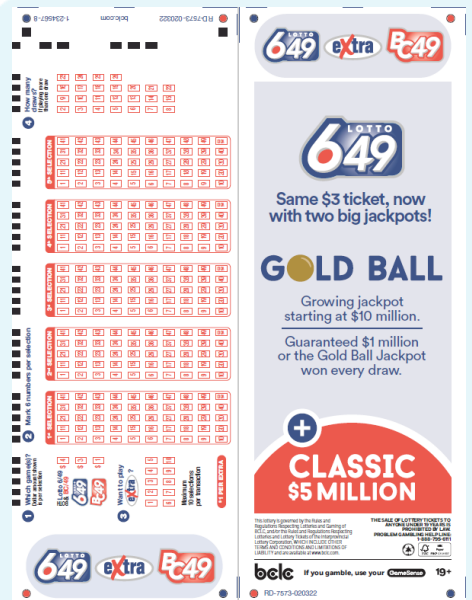
Selection Slips

Please replace existing selection slips with new selection slips

Hurricane Sign Coroplast
(select locations only)

Please keep and use existing flip pad numbers on this new jackpot sign

Hurricane Sign Topper
(select locations only)



Contact your Territory Manager or Lottery Hotline: **1-800-667-1649**

